



SOUTH AUSTRALIA  
VICTORIA  
JUNE 2023

AUSTRALIAN  
HARD  
WHEAT

# ROCKSTAR



FARMER TO FARMER  
TRADE APPROVED

**The hard wheat  
that rocks till late!**

## VARIETY OVERVIEW

ROCKSTAR<sup>®</sup> is an exceptionally high-yielding, mid-slow spring maturing variety, with a similar maturity to LRPB Trojan<sup>®</sup>. It has an AH classification in the southern zone. ROCKSTAR<sup>®</sup> delivers exceptional yields and provides a large yield improvement within the mid-slow spring maturity class. ROCKSTAR<sup>®</sup> is an excellent varietal alternative to LRPB Trojan<sup>®</sup>, and Catapult<sup>®</sup>.

ROCKSTAR<sup>®</sup> offers an opportunity to maximise earlier sowing opportunities and spread flowering windows during critical spring stress periods. ROCKSTAR<sup>®</sup> has good stem rust (MRMS) and yellow leaf spot (MRMS) resistance.

ROCKSTAR<sup>®</sup> has good grain size and test weight, and has a moderate plant height, similar to Mace<sup>®</sup>. ROCKSTAR<sup>®</sup> has a higher risk of pre-harvest sprouting and harvest management strategies may be required.

**ROCKSTAR<sup>®</sup> is available through Farmer to Farmer trade. Please get in touch with your local InterGrain Territory Manager for seed enquiries.**

## VARIETY AT A GLANCE



EXCEPTIONAL  
YIELD AND YIELD  
STABILITY



MID-SLOW  
MATURITY



GOOD GRAIN  
SIZE



GOOD YELLOW  
LEAF SPOT  
RESISTANCE  
(MRMS)



GOOD  
STEM RUST  
(MRMS)

\*Based on 2018-22 SA & Vic predicted NVT Long-term Main Season % Yield Performance, average of 2018-22 annual yield and yield environment results.

## PLANT FEATURES

	ROCKSTAR <sup>®</sup>	CATAPULT <sup>®</sup>	LRPB TROJAN <sup>®</sup>	SCEPTER <sup>®</sup>
<b>Classification (Southern Zone)</b>	AH	AH	APW	AH
<b>Maturity</b>	Mid-Slow	Mid - Slow	Mid - Slow	Mid
<b>Coleoptile</b>	Medium	-	Medium	Medium - Short
<b>Plant Height</b>	Medium	Medium	Medium	Medium

2023 South Australian Crop Sowing Guide, 2023 Victorian Crop Sowing Guide and InterGrain wheat breeding.

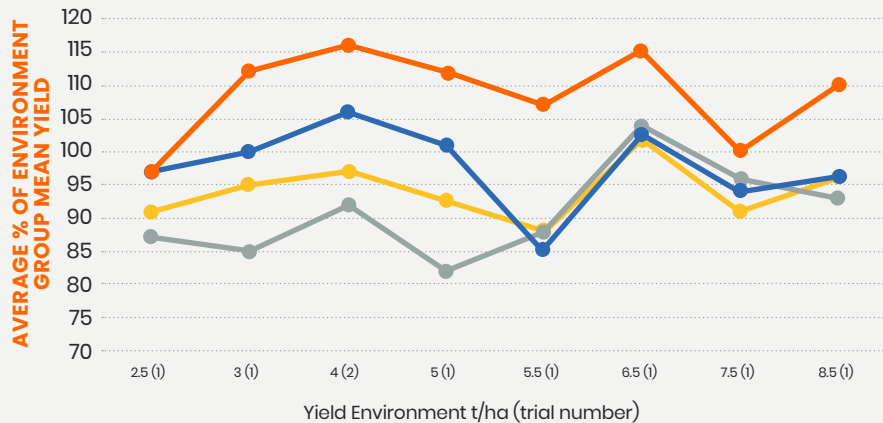
## DISEASE RATINGS

	ROCKSTAR <sup>®</sup>	CATAPULT <sup>®</sup>	LRPB TROJAN <sup>®</sup>	SCEPTER <sup>®</sup>
<b>Leaf Rust</b>	S	S	MR	MSS
<b>Stem Rust</b>	MRMS	MR	MRMS	MRMS
<b>Stripe Rust (2023 East Coast)</b>	S	S	S	MSS
<b>CCN</b>	MSS	R	MS	MRMS
<b>Powdery Mildew</b>	SVS	S	S	SVS
<b>Septoria Nodorum Blotch (Leaf)</b>	MRMS	MRMS	MS	MRMS
<b>Septoria Tritici Blotch</b>	S	MSS	S	S
<b>Yellow Spot</b>	MRMS	MRMS	MSS	MRMS

Source: 2022 NVT Pathology consensus disease ratings. # May be more susceptible to alternate pathotypes.  
R = Resistant, RMR = Resistant to Moderately Resistant, MR = Moderately Resistant, MRMS = Moderately Resistant to Moderately Susceptible, MS = Moderately Susceptible, MSS = Moderately Susceptible to Susceptible, S = Susceptible, SVS = Susceptible to Very Susceptible, VS = Very Susceptible.

## YIELD PERFORMANCE - SA

### EARLY SEASON

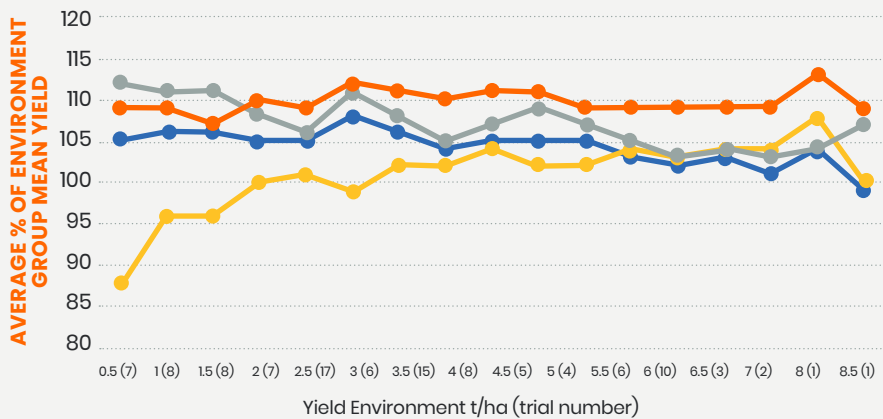


2018-22 SA early season predicted NVT MET yield performance, represented by yield environment as a % of site mean yield

Data accessed from the NVT online website on 25/04/2023.

● ROCKSTAR<sup>®</sup> ● CATAPULT<sup>®</sup> ● LRPB TROJAN<sup>®</sup> ● SCEPTER<sup>®</sup>

### MAIN SEASON



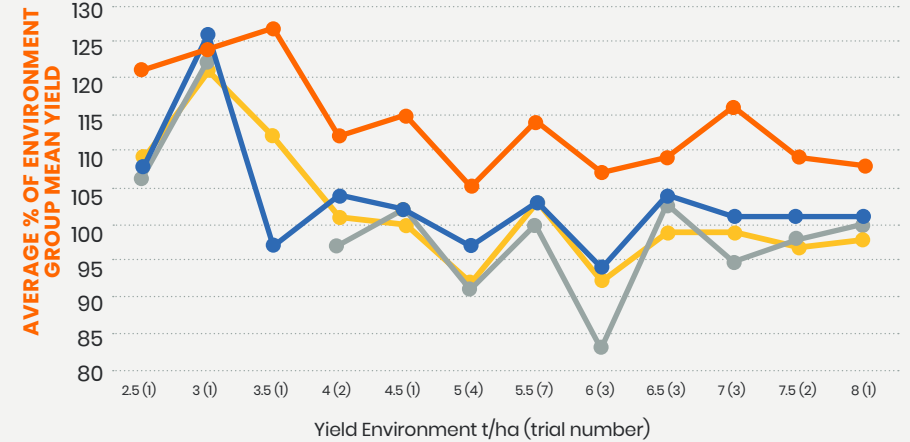
2018-22 SA main season predicted NVT MET yield performance, represented by yield environment as a % of site mean yield

Data accessed from the NVT online website on 15/03/2023.

● ROCKSTAR<sup>®</sup> ● CATAPULT<sup>®</sup> ● LRPB TROJAN<sup>®</sup> ● SCEPTER<sup>®</sup>

## YIELD PERFORMANCE - VIC

### EARLY SEASON

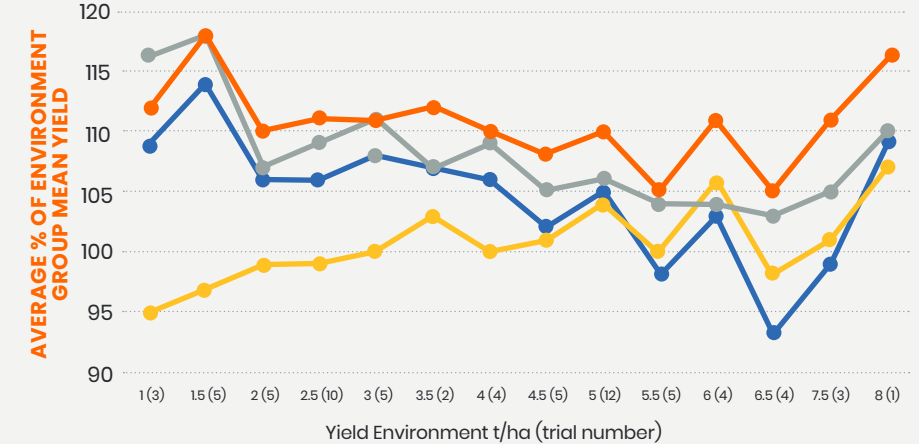


2018-22 Vic early season predicted NVT MET yield performance, represented by yield environment as a % of site mean yield

Data accessed from the NVT online website on 25/04/2023.

● ROCKSTAR<sup>®</sup> ● CATAPULT<sup>®</sup> ● LRPB TROJAN<sup>®</sup> ● SCEPTER<sup>®</sup>

### MAIN SEASON



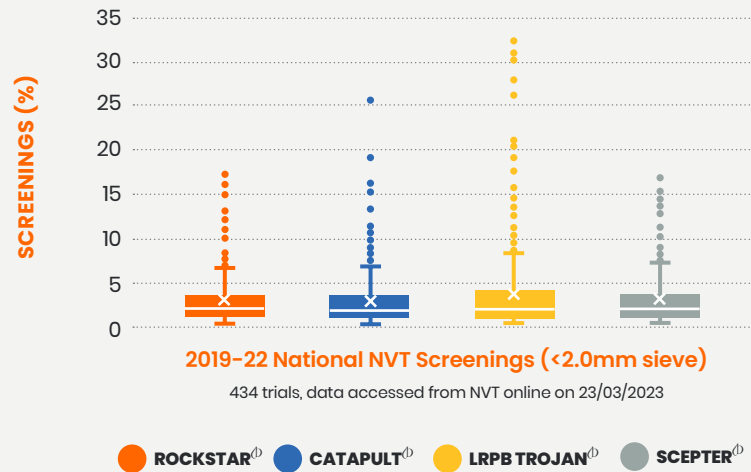
2018-22 Vic main season predicted NVT MET yield performance, represented by yield environment as a % of site mean yield

Data accessed from the NVT online website on 15/03/2023.

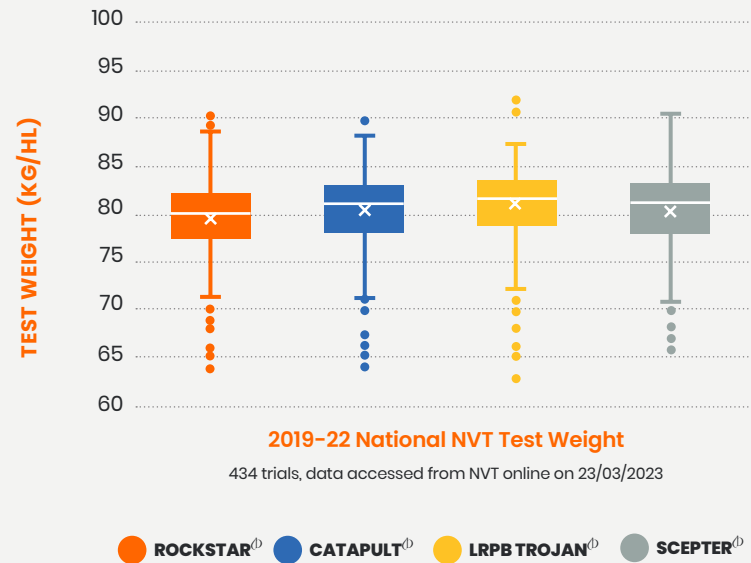
● ROCKSTAR<sup>®</sup> ● CATAPULT<sup>®</sup> ● LRPB TROJAN<sup>®</sup> ● SCEPTER<sup>®</sup>

# GRAIN QUALITY

## SCREENINGS



## TEST WEIGHT



## INTERGRAIN CONTACTS

**VIC:**

**Shannen Barrett**

**0408 615 431**

**sbarrett@intergrain.com**

**SA:**

**Rehn Freebairn**

**0447 711 905**

**rfreebairn@intergrain.com**

## PBR/EPR

ROCKSTAR<sup>®</sup> is protected by Plant Breeder's Rights and is subject to an end point royalty of \$3.50/tonne GST exclusive.

### Disclaimer

The material contained in this publication is considered true and correct as at the date of this publication. The publication is a general guide only prepared solely for the purpose of providing general information in connection with InterGrain, its business and, if applicable the services and products provided by InterGrain. InterGrain does not warrant or guarantee the accuracy, completeness or currency of the publication material and information. InterGrain strongly recommends the publication reader independently research or obtain independent professional advice in connection with the use of the publication material and information for any business decision.

Neither InterGrain, its officers, directors, affiliates or employees, are liable for any cost, expense, damage, liability or loss suffered or incurred by a publication reader or any other party related in any way to the publication reader as a result of the use of publication material and information.

Publication Date: June 2023 © Intergrain Pty Ltd 2023. All rights reserved.

**intergrain.com**